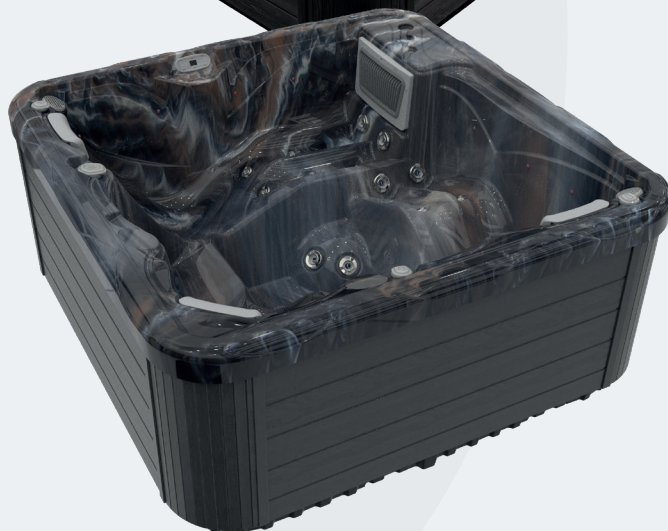


FEATURES:

Collection	Avon
Dimensions	2000 x 2000 x 890 mm
Dry weight	246 kg
Volume	1000l
Seats	5
Sitting place:	3
Reclining place:	2
Pumps	1 x 3HP Single speed booster pump 1 x 0.33HP Circulation pump
Heater	3 kw
Control panel	Easy 4 control panel
Drain	3/4"
Total number of jets	42
2"	20
3"	22
5"	-
Tap	No
Air regulator	3
Water diverter	1
Frame	Wood
Base	ABS
Headrest	3
Water inlet	No
Fountain	No
Exclusive colour LED lighting	16
Underwater lighting	No
Filtration system	Wall skimmer
Water locks	On circulation line
Power requirement	min: 230V/1 x 16A/50Hz opt: 400V/3 x 16A/50Hz (24A)
Acrylic colour	Sterling Silver or Midnight Canyon
Cartridge filter	2 x 25 sq ft
Cabinet colour	Grey
Cabinet material	WPS
Insulation	1cm
Vent grid	Engraved
Water sanitisation	Ozone
Sound system	MyMusic 4.0
Heat pump compatible	Possible with pipework alterations
Optional accessories	Easy cover lifter and Easy step



PRODUCT CODES:

VS/PE/MC/G

VS/PE/SS/G

valetespas.co.uk | info@valetespas.co.uk